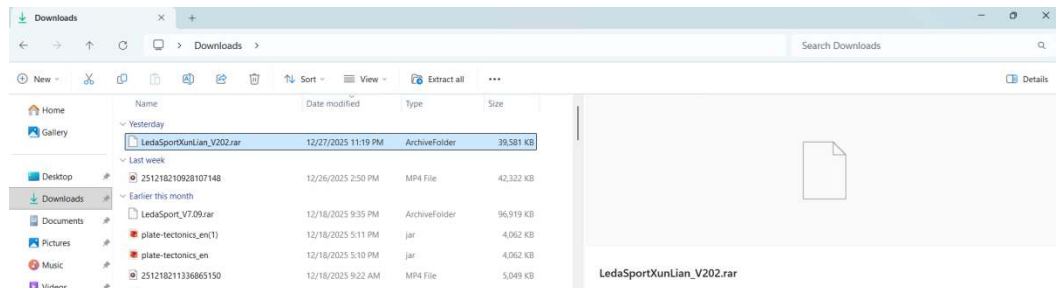
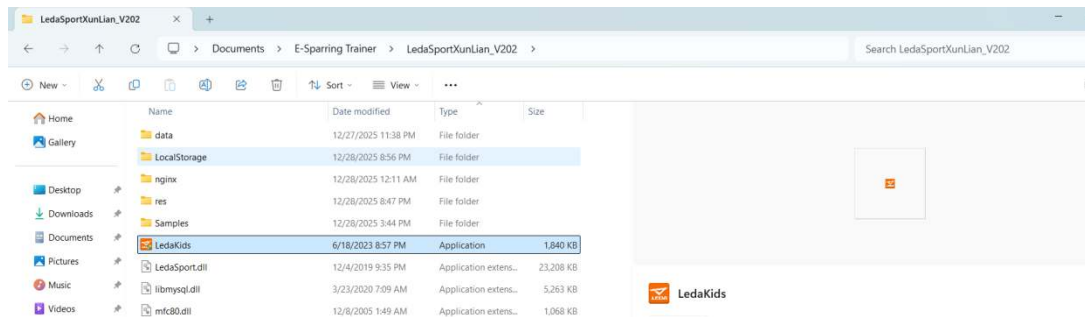


## LEDA MULTI SPORT PSS SYSTEM SETUP

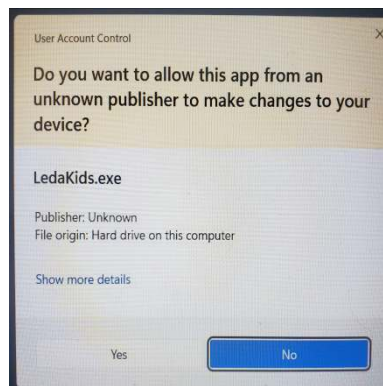
1. Things to have before starting the system setup process.
  - a. All equipment fully charged. Head gears and chest gears.
  - b. Receiver with yellow Ethernet cable and power supply.
2. Download the Leda Sport software. The software is available on the **E-Sparring.com** website. Once you have downloaded the file **LedaSportXunLian\_V202** it will appear in **Downloads** in file explorer. See below attachment.



3. Now double click on the **LedaSportXunLian\_V202** to unzip the downloaded software file. Select location C: as location to extract files to. This will create the folder **LedaSportXunLian\_V202**. See below sample of extracted files.



4. Double click on the **LedaMulti** file to start the software. **The software is in Chinese, but we have translated the instructions in this PFD file to English to simplify the process.** Select **YES** to continue.



5. Once you have clicked on the **YES** box. The following screen will appear for a second before entering the actual software.



6. This screen will appear indicating the software has loaded. Click on the button above the **START** text.



7. Once you click on **START** the following screen will appear. Once this screen appears you need to power up the receiver and connect the Ethernet cable to the receiver and the laptop. *On a newer laptop you will need to change the internet selection to LedaSports-\*\*\*\*, by clicking on the WiFi signal indicated by the red arrow. The password is **ldty8888***



Now powerup all equipment. Separate the equipment by sets to simplify the process.



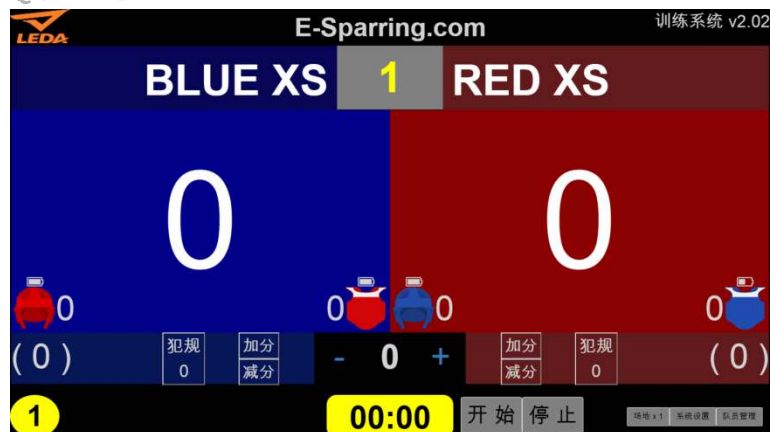
- For every set you want to use you will need to setup both head gears and chest gears. Click on the box next to **INPUT GEAR**. Once you click on the box the following page will appear. Start with **number 1** and work your way down for as many gear sets you need to activate.



- Once again start with **1**, click on the **HELMET ID** and select the helmet ID serial number you are linking. Then click on **CHEST ID** and select the chest ID serial number you are linking. The serial numbers are on the transmitters. Once completed click on the button below **CONFIRM**. Repeat these steps for the next set of equipment you want to link until you have linked and confirmed all your equipment.
- Once you are done, now click on the green button below **START**. See below.



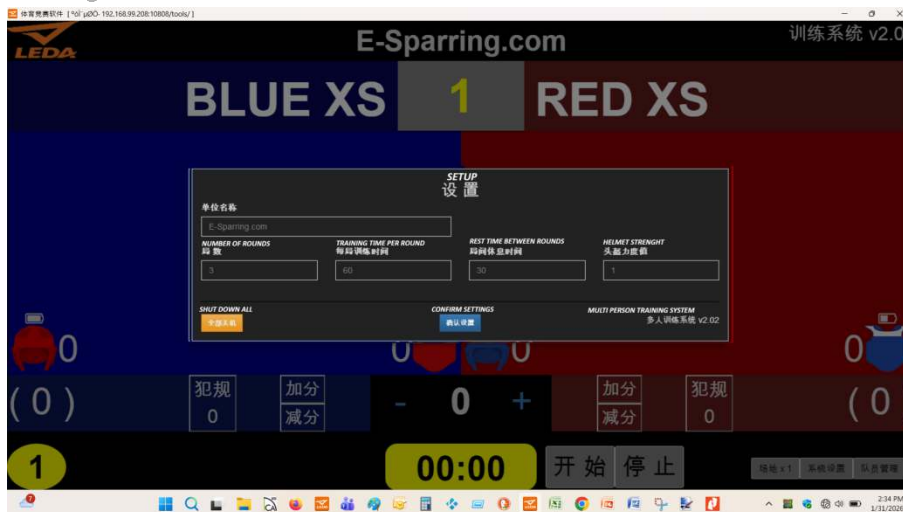
- The following screen will appear once you have clicked on **START**. The Leda symbol on the top left corner indicates that the receiver is on and working.



- If you are only using one set for training or sparring. Then all you need to do is click on the blue area below E-Sparring.com and next to the yellow 1. Select the name with the equipment (**BLUE XS**). Now click on the red area below E-Sparring.com and next to the yellow 1. Select the name with the equipment (**RED XS**). You will know you are connected once the little helmet and chest armor light up on the screen.



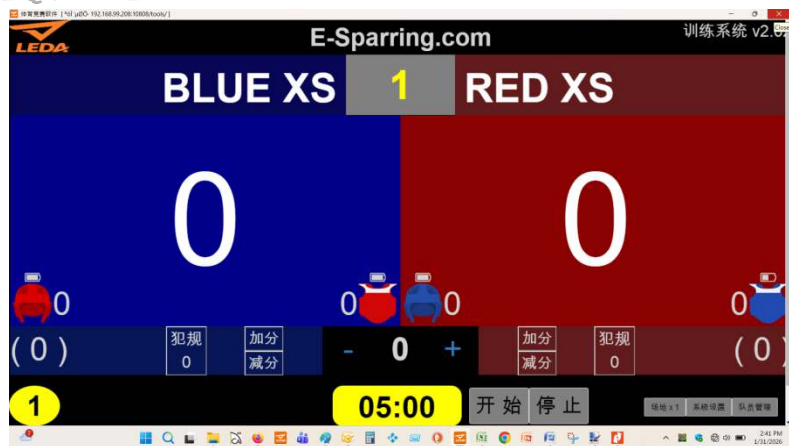
- Click on **SYSTEM SETTING** to set the number of rounds, round length in seconds, and rest time between rounds. And click on button below **CONFIRM SETTINGS**. At this point click on the button below **START** to begin match or training. If you want more than 1 set of equipment on a multi screen then go to step 15 other wise continue to step 12.



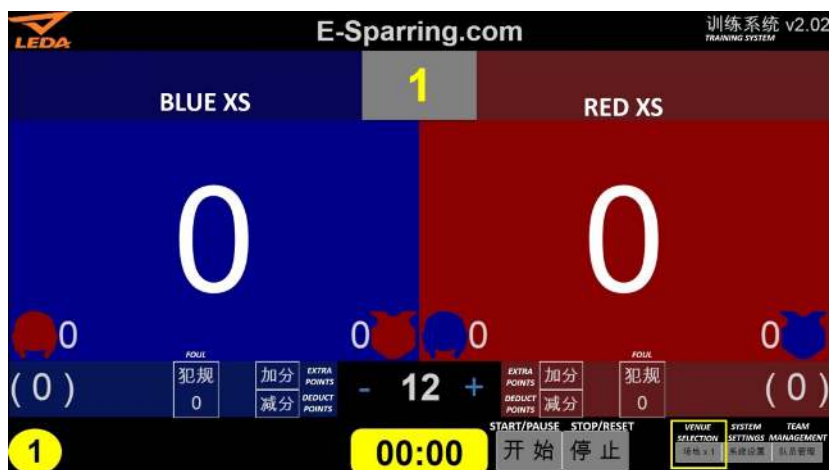
14. Once you click **START** the timer and the points are started as shown below. Once a round is completed the rest timer will come on. Once the rest timer in complete you will need to click on the **START** button again. Once completed you can click on **RESET** then **START** to reset points, timer and round.



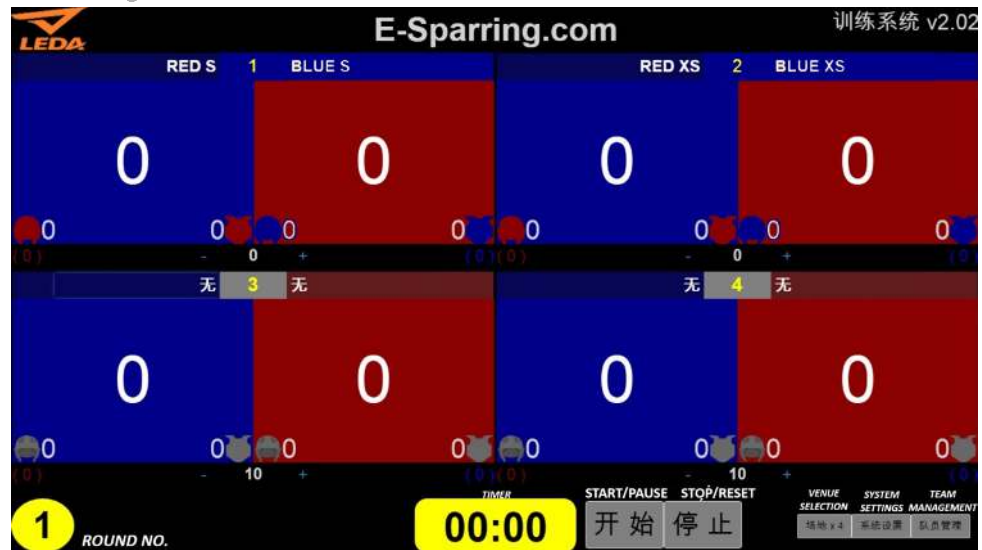
15. When done with all matches and training press on the Esc button on your laptop. This will take you to the following screen. Now click on X on the top right hand corner of your screen to close out the program.



16. Setting up multiple matches or training on your Leda Multi V4 or V6 PSS system. Click on the **VENUE SELECTION** and select 4, 8, or 16. Most likely you will choose 4.



17. If you selected 4 then the following multi screen will appear. At this point go to each screen and select the pairs which you want to set up in each ring.



Enjoy your Leda Multi Sport PSS training system and check out our videos on the website for addition information or help. We thank you for your business and hope you love this system as much as we do. Check us out on [www.E-Sparring.com](http://www.E-Sparring.com) for addition equipment.



南京乐打体育科技有限公司

# 跆拳道竞赛系统

Taekwondo competition system

多人训练

START

智能时代 引领未来

乐在其中 打出精彩

ENJOY IT AND MAKE IT WONDERFUL

EXIT

返回主界面

训练系统 v2.02

### 队员信息

TEAM INFORMATION

RETURN TO HOMEPAGE 返回首页

INPUT GEAR 信息修改 队员导入 去训练 START

序号	TEAM MEMBER 队员	WEIGHT 体重	HEAD GEAR ID 头盔编号	CHEST GEAR ID 护具编号
1	RED XS	18	9451dc48bd84	781c3cd0c2b5
2	BLUE XS	26	08a6f71d156c	9451dc48bd84
3	RED S	35	9451dc48bb28	f4650bb04315
4	BLUE S	18	08a6f71c4c7c	441d64fcb3b0
5	RED M	22	c44f390320e	c44f39031d5
6	BLUE M	38	600194d77905	c44f39031d5
7	EXTRA1	26	2cf432cf4378	600194f065b8
8	EXTRA2	35	600194f068a2	2cf432cf43c4
9	EXTRA3	18	600194f06bd6	2cf432cf47c6
10	EXTRA4	26	600194f06c7d	840db6e674e6f
11	EXTRA5	27	600194d7790b	c44f390402f
12	EXTRA6	33	600194d77b40	c44f3904712

训练系统 v2.02

### 队员信息

TEAM INFORMATION

RETURN TO HOMEPAGE 返回首页

INPUT GEAR 信息修改 队员导入 去训练 START

序号	TEAM MEMBER 队员	WEIGHT 体重	HEAD GEAR ID 头盔编号	CHEST GEAR ID 护具编号
1	RED XS	18	9451dc48bd84	781c3cd0c2b5
2	BLUE XS	26	08a6f71d156c	9451dc48bd84
3	RED S	35	9451dc48bb28	f4650bb04315
4				441d64fcb3b0
5				c44f39031d5
6				c44f39031d5

**MODIFY TEAM MEMBER INFORMATION**

**队员信息修改**

TEAM MEMBER 队员姓名	WEIGHT 队员体重(kg)	HELMET ID 头盔编号	CHEST ID 护具编号
RED XS	25	空	空

CONFIRM  
确定

训练系统 v2.02

### 队员信息

TEAM INFORMATION

RETURN TO HOMEPAGE 返回首页

INPUT GEAR 信息修改 队员导入 去训练 START

序号	TEAM MEMBER 队员	WEIGHT 体重	HEAD GEAR ID 头盔编号	CHEST GEAR ID 护具编号
1	RED XS	20	9451dc48bd84	441d64fcb3b0
2	BLUE XS	20	08a6f71d156c	f4650bb04315
3	RED S	35	9451dc48bb28	9451dc48bd84
4	BLUE S	35	08a6f71c4c7c	781c3cd0c2b5
5	RED M	45	9451dc48c67d	9451dc48bd84
6	BLUE M	45	08a6f71d17dc	441d64fcb4a9

LEDA E-Sparring.com 训练系统 v2.02 TRAINING SYSTEM

BLUE XS 1 RED XS

0 0

FOUL (0) 犯规 0 加分 减分 EXTRA POINTS DEDUCT POINTS - 0 + EXTRA POINTS 加分 减分 DEDUCT POINTS FOUL (0) 犯规 0

1 00:00 开始 停止 START/PAUSE STOP/RESET

VENUE SELECTION 场地 x 1 SYSTEM SETTINGS 系统设置 TEAM MANAGEMENT 队员管理

LEDA E-Sparring.com 训练系统 v2.02 TRAINING SYSTEM

BLUE XS 1 RED XS

SETUP 设置

单位名称: E-Sparring.com

NUMBER OF ROUNDS 回合数: 3

TRAINING TIME PER ROUND 每回合训练时间: 60

REST TIME BETWEEN ROUNDS 回合休息时间: 30

HELMET STRENGTH 头盔力量值: 1

SHUT DOWN ALL 全部关闭

CONFIRM SETTINGS 确认设置

MULTI PERSON TRAINING SYSTEM 多人训练系统 v2.02

FOUL (0) 犯规 0 加分 减分 EXTRA POINTS DEDUCT POINTS - 0 + EXTRA POINTS 加分 减分 DEDUCT POINTS FOUL (0) 犯规 0

1 00:00 开始 停止 START/PAUSE STOP/RESET

VENUE SELECTION 场地 x 1 SYSTEM SETTINGS 系统设置 TEAM MANAGEMENT 队员管理

LEDA E-Sparring.com 训练系统 v2.02 TRAINING SYSTEM

BLUE XS 1 RED XS

0 0

FOUL (0) 犯规 0 加分 减分 EXTRA POINTS DEDUCT POINTS - 12 + EXTRA POINTS 加分 减分 DEDUCT POINTS FOUL (0) 犯规 0

1 00:00 开始 停止 START/PAUSE STOP/RESET

VENUE SELECTION 场地 x 1 SYSTEM SETTINGS 系统设置 TEAM MANAGEMENT 队员管理

LEDA E-Sparring.com 训练系统 v2.02 TRAINING SYSTEM

BLUE XS 1 RED XS

0 0

(0) 犯规 0 加分 EXTRA POINTS 减分 DEDUCT POINTS - 12 + EXTRA POINTS 加分 犯规 0 DEDUCT POINTS 减分 (0)

1 00:00 开始 停止

VENUE SELECTION 场地 x 1 SYSTEM SETTINGS 系统设置 TEAM MANAGEMENT 队员管理

场馆 x 1  
场地 x 4  
场地 x 8  
场地 x 16

LEDA E-Sparring.com 训练系统 v2.02

RED S 1 BLUE S RED XS 2 BLUE XS

0 0 0 0

(0) 0 0 0 0 (0) (0) 0 0 0 0 (0) (0)

无 3 无 无 4 无

0 0 0 0 0 0 0 0 0 0 0 0

1 00:00 开始 停止

VENUE SELECTION 场地 x 4 SYSTEM SETTINGS 系统设置 TEAM MANAGEMENT 队员管理

ROUND NO.

LEDA E-Sparring.com 训练系统 v2.02

1 RED XS/00 2 RED S/1

0 0 0 0

(0) 0 0 0 0 (0) (0) 0 0 0 0 (0) (0)

3 RED M/2 无 4 无

0 0 0 0 0 0 0 0 0 0 0 0

1 00:00 开始 停止

VENUE SELECTION 场地 x 4 SYSTEM SETTINGS 系统设置 TEAM MANAGEMENT 队员管理

ROUND NO.